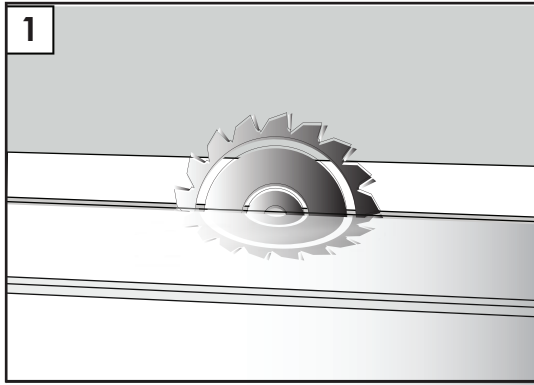


□ AGT

WOOD
MEETS
TECHNOLOGY

**3 DIMENSIONAL
WALL COVERING/
FURNITURE PROFILE/
SKIRTING USER
MANUAL**

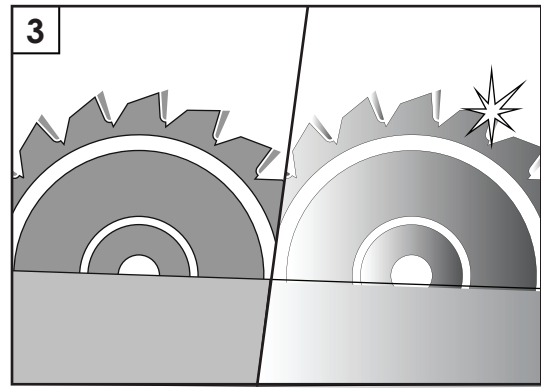


1. Buttress threaded saw shall be used for cutting.

2. Cutting on the cutting machine shall be performed in 90 degree vertically and in 45 degree horizontally.

4. The PVC surface coating that you use is hardened specifically against scratching. Against the possibility that two hard surfaces damage each other, the production shall be carried out in such a way that materials do not rub with each other.

In order to prevent the products from rubbing against each other and deforming while being removed from the package, it is recommended to open the package completely instead of opening one side of the box.



3. It shall be ensured that the saw is ground well.



5. Colour tones and production dates shall be taken care of for the successive works.

6. Potential thickness differences at corner joints shall be reflected on the rear surfaces. (Even though MDF thickness difference tolerances vary by thickness in technical catalogues, it is $\pm 0,2$ mm for the products up to 19 mm and 0,3 mm for the products thicker than 19 mm.)

7. Applying some silicon or adhesive on profile channels before the assembly will increase the cover quality and fill the gaps inside.

8. Each model does not have its own glass model. Therefore, in case making a glassed model, you can obtain a glass model by cutting the bulge at the underneath of channel. Dovetail system shall be preferred for the joints at 45 degree. If a glued joint is made, dowel shall be used.

9. It shall be ensured that the ambient temperature is around 25 degree in order to let penal products be cut without any problem.

10. Profiles shall be cut in such a way that the front surface stays on the upper side.

11. For 1 size product 2 bumps s can be located on the condition that the diameter of a bump is smaller than 1.5 mm and distance between each bump is at least 50 cm. Any bump with a diameter bigger than this cannot be accepted.

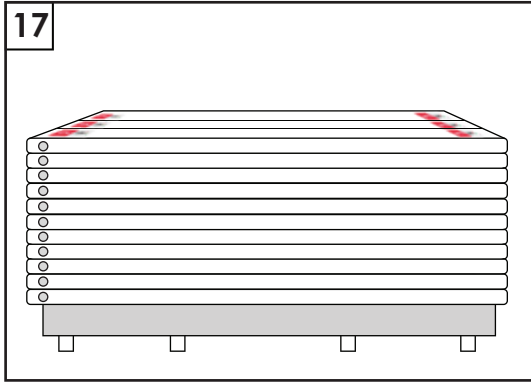
12. Production tolerance for the possible defects at the edges of product is 7 mm for both edges of the profile.

13. 1 collapse spot may be located for 1 size product provided that the diameter of this spot is smaller than 2 mm.

14. Only 1 stain can be located on one size product on the condition that its diameter is smaller than 2 mm and it is not apparent when observed from 60 cm distance at an angle of 45-degree.

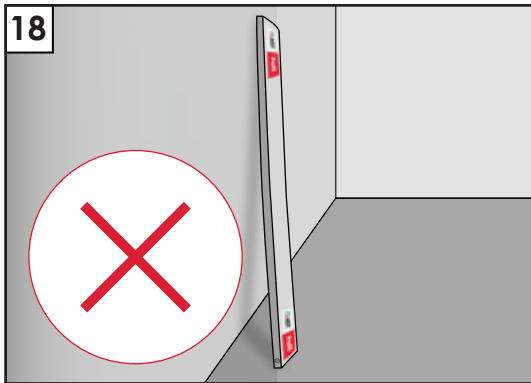
15. Only 1 stain can be located on a profile on the condition that it is not apparent when observed from 60 cm distance at an angle of 45-degree. Apparent discolouration (white-colour) cannot be accepted.

16. Products that are coated by protective film layer on the product surface (for protection) shall not be removed after the assembly because of the fact that it minimizes the damages that may occur during the production.



17. When the product is stocked up horizontally at the warehouse it shall be ensured that it is stocked up on chocks at equal intervals to avoid rotation.

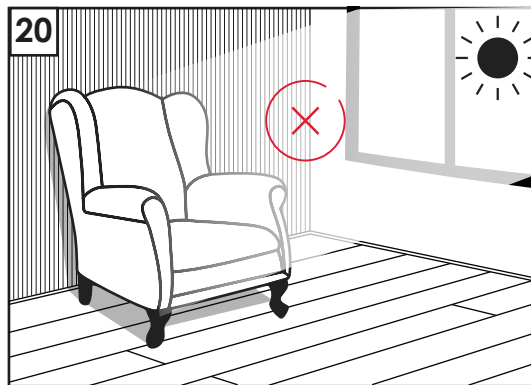
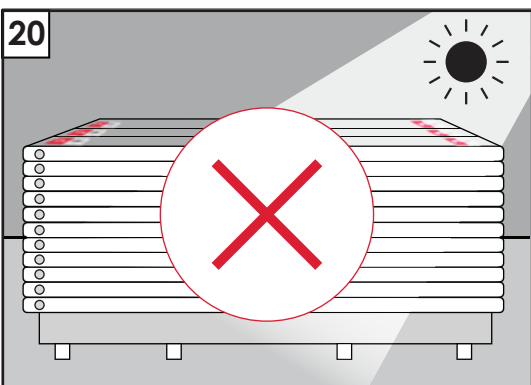
It is recommended to stack maximum 2 pallets on top of each other in floor stacks.



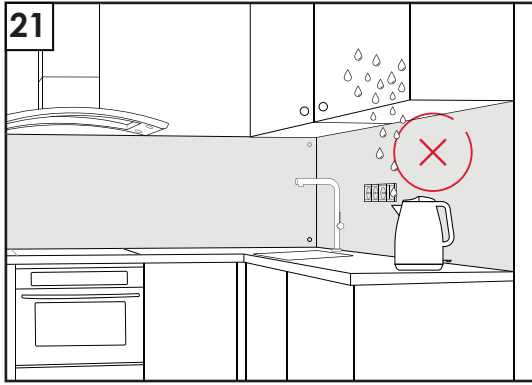
18. When panels are put into process stowing shall be applied cautiously in order to prevent the formation of crushing, collapse and fracture at the edges and corners. In order to prevent rotation, products shall be:

- Products shall never be kept vertically!
- The air circulation of warehouse shall be minimized. Product storage areas shall be away from the doors.

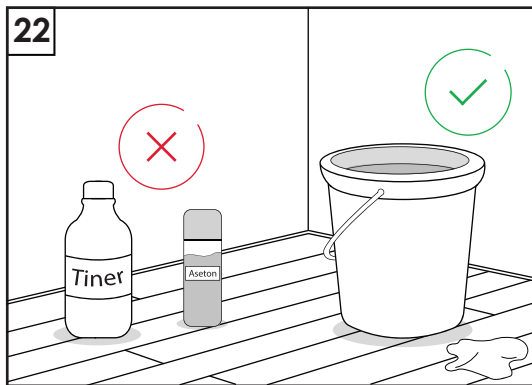
19. Make sure that the products are moved at the warehouse by lifting and they do not rub with each other while moving.



20. Products shall not be subjected to direct sunlight.



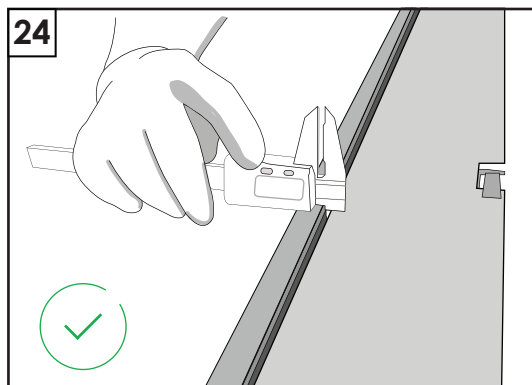
21. Products shall not be used at the open spaces, gardens and places where are washed through water and where are directly subjected to steam.



22. Wet-cotton cloth, soapy-cotton cloth or alcohol-free fluid surface cleaning agents shall be used for cleaning the products.

For acoustic wall profiles; it is recommended to clean the area with acoustic felt after sizing and assembly with an air gun or a vacuum cleaner with a suitable nozzle instead of any cloth or cleaning material.

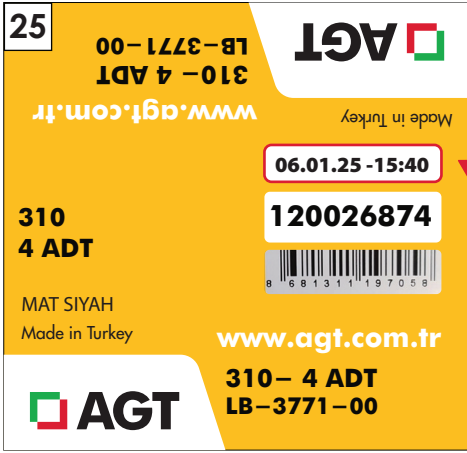
23. Alcoholic surface cleaning agents and scrubbing agents shall never be used. When you use such agents, it will cause tarnishing and scratching on the surface. Thinner and substances that contain acid shall never be used for cleaning.



24. Although the amount of inclination in the profile and skirting can vary according to the milling channel and model, it is maximum 10 mm in length. The maximum rotation to the blade in profile and skirting is 8 mm. As an exception, only for SPR-5030's, the maximum amount of rotation to the longitudinal and blade is 20 mm. (Rotations should be measured with a level gauge).

Recommended relative humidity rate is between 45% and 65%.

Rotations, which occur as a result of situations where products are stowed improperly, temperature and humidity values of storage area are out of limit and products are exposed to air circulation that are out of limit, and therefore go out of limit values are not covered by the guarantee.



25. The production dates on the package are important. To avoid tone differences in subsequent jobs, the products should be used by the following production dates.

26. While profiles are carried by hands protective gloves and shoes shall be worn in order to avoid injuries.

Profile Usage Areas;

1. Applications depending on the profile model:
2. In ceiling constructions,
3. As skirting boards in parquet wall joints,
4. Furniture coverings
5. Wall panelling

Where is it Used?



Warranty and Return Conditions;

1. The warranty period is 2 years and starts from the date of receipt of the product by the consumer.
2. Regarding the products stated to be defective, the definition of the defect, test results, if any, and the selection right (*) they request together with the document clearly showing the visual of the defect (picture, video, ...) should be sent to our company within the legal period.

(*)Pursuant to Article 11 of the Consumer Protection Law No. 6502; As a consumer, you may exercise one of the following selection rights:

- a) Returning from the contract by declaring that you are ready to return the sold goods,
- b) Retaining the sold goods and asking for a discount from the sale price in proportion to the defect,
- c) Requesting free of charge repair of the goods sold at the seller's expense, unless it requires an excessive expense,
- d) If it is possible,

not asking for the replacement of the sold item with a defect-free copy,

3. Upon the application made, after the documents are examined, a sample will be requested if necessary, and in line with the results of the "Product Inspection Report" to be issued after the analysis and controls, it will be determined whether the error, defect or fault stated to be present in the product is due to production and whether it is covered by the warranty.

4. The claim will be met according to the type of selection right you have requested regarding the defective or faulty product determined to be within the scope of the warranty.

5. If repair is requested within the warranty period, the maximum repair period is 30 days.

6. The maximum service life of the product is 10 years.

Conditions not covered by the warranty

1. Conditions not caused by a manufacturing defect

2. Use contrary to the operating and maintenance instructions.

3. Deformations on the surfaces of the products during transport, relocation after the delivery of the product, damage and malfunctions caused by external physical factors (impact, scratch, breakage).

4. Damages and malfunctions caused by assembly by unauthorised persons, faulty assembly in violation of the operating and maintenance instructions and external factors.

Use of abrasive chemicals such as thinner, acetone, paint remover, bleach, hydrochloric acid, whitener and granular cleaning materials for cleaning. Surface defects and deformations caused by the use of abrasive-based cleaning tools such as sandpaper, dishwashing wire, dishwashing sponge, etc. with hard surfaces.

No one other than the Company may assert or claim a different warranty condition other than these conditions.

Complaint and Appeal authority:

As a consumer, applications regarding your complaints and objections can be made to consumer courts and consumer arbitration committees.



agt.com.tr

[f](#) [t](#) [p](#) [i](#) [y](#) /agtthinkwithus

Merkez | Head Office

Organize Sanayi Bölgesi
3. Kısım, 35. Cadde, 07190
Döşemealtı, Antalya, Türkiye
Tel: +90 242 249 17 17
Fax: +90 242 249 17 27

İstanbul Ofis | Istanbul Office

Kısıklı Mh. Alemdağ Cad. No: 36
34693 Çamlıca, İstanbul, Türkiye
Tel : +90 216 344 82 48
Fax : +90 216 316 82 48